

# **KitchenAid® Trash Compactor**

**Model KUCS180**



TO GET THE MOST FROM  
THIS APPLIANCE  
**PLEASE READ**

**USE AND CARE GUIDE**

# IMPORTANT SAFETY INSTRUCTIONS

**WARNING**—When using your compactor, follow basic precautions, including the following:

1. Read all instructions before using the compactor.
2. This compactor must be properly grounded. See Page 4 for Grounding Instructions.
3. Do not allow children to operate the compactor. Remove the key when not in use.
4. Use the compactor only for its intended function.
5. Place glass bottles on their sides and in the center of the drawer so that the broken glass will be kept away from the sides of the bag.
6. Do not compact paint, oil, gasoline or turpentine cans or rags which have been used with these materials.
7. Do not compact containers of flammable or toxic materials or aerosol cans.
8. When cleaning compactor, avoid contact of the trash basket and ram with bare hands; small pieces of crushed glass may adhere to these surfaces.
9. When using the trash basket without bags, always dump trash using the half basket; DO NOT USE BARE HANDS.
10. Handle bag carefully by the top when removing from trash basket; sharp objects may protrude through bag.

## SAVE THESE INSTRUCTIONS

---

### OWNERSHIP REGISTRATION CARD

Before you use your compactor, please fill out and mail your ownership registration card. This card will enable us to contact you in the unlikely event of a product safety notification and assist us in complying with the provisions of the Consumer Product Safety Act. THIS CARD DOES NOT VERIFY YOUR WARRANTY.

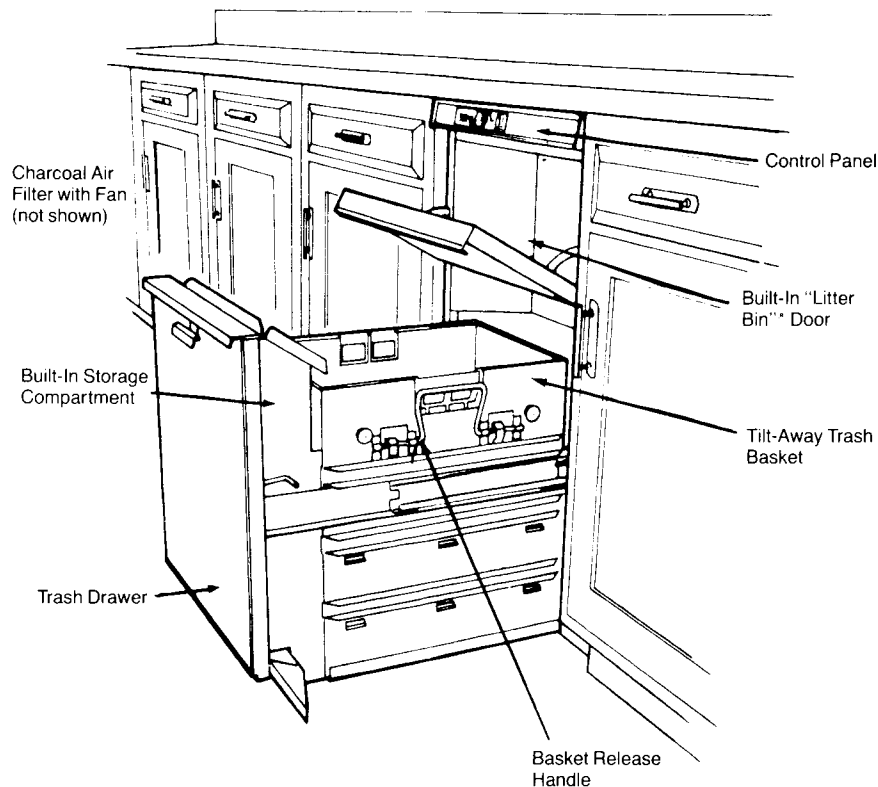
Keep a copy of the bill of sale showing the date of purchase and/or date of installation of your compactor. PROOF OF PURCHASE WILL INSURE YOU OF IN-WARRANTY SERVICE.

Write down the following information. You will need it if your compactor ever requires service.

Model Number* _____	Dealer's Name _____
Serial Number* _____	Address _____
Date Purchased _____	Phone _____
Date Installed _____	

\*Model and Serial Numbers are located on a label at the left side of the Trash Drawer opening on the Compactor frame.

## COMPACTOR FEATURES



Your KitchenAid Compactor has a built-in interlock and will not operate unless you have:

1. Closed the Trash Drawer
2. Turned key to START

STOP/LOCK will stop the ram movement at any point. After stopping the unit, turn key to START and ram will return to original "up" position.

**WARNING:** DO NOT ALLOW CHILDREN TO OPERATE COMPACTOR. We recommend that you remove the key when not in use. The unit will not operate without it. The trash door cannot be locked. Therefore, before running a compaction cycle, always check to be sure that no item has been mistakenly placed in the Trash Drawer.

## PREPARING YOUR KITCHENAID COMPACTOR FOR USE

### CONNECTING POWER CORD TO GROUNDED OUTLET

Your KitchenAid Compactor operates on regular 115 volts, 60 hertz a.c. house current to be supplied by a 3-PRONG GROUNDING RECEPTACLE LISTED BY UNDERWRITERS LABORATORIES. The circuit used should be protected by a 15-amp fuse or circuit breaker. Be sure key is in STOP LOCK position before connecting Compactor to electricity.

**WARNING:** Do not use an extension cord.

### GROUNDING INSTRUCTIONS

This appliance must be grounded. In the event of a malfunction or break down, grounding will reduce the risk of electric shock by providing a path of least resistance for electric current. This appliance is equipped with a cord having an equipment grounding conductor and a grounding plug. The plug must be plugged into an appropriate outlet that is installed and grounded in accordance with the National Electrical Code and with all local codes and ordinances.

**WARNING:** Improper connection of the equipment grounding conductor can result in a risk of electric shock. Check with a qualified electrician or serviceman if you are in doubt as to whether the appliance is properly grounded. Do not modify the plug provided with the appliance. If it will not fit the outlet, have a proper outlet installed by a qualified electrician.

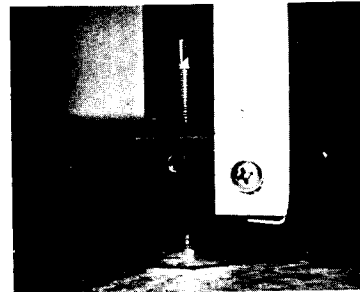
**NOTE:** In recessed applications, do not pinch 3-prong plug between Compactor and wall.

See your **INSTALLATION INSTRUCTIONS** for complete details.

### LEVELING COMPACTOR

Your Compactor has four leveling feet that will vary the height and provide level stability within a range of 1¼-inches. Simply raise or lower as required for your particular installation situation.

A minimum ¼-inch clearance **MUST BE MAINTAINED** between Compactor top and counter top for service accessibility.



### AVAILABILITY OF ACCESSORIES

Trash bags and charcoal air filters may be obtained from your KitchenAid dealer or direct from KitchenAid through the mail.

### CONVERSION TO A FREE STANDING UNIT

Laminated Maple Wood Top Conversion Kit (Part #4164800) — A beautifully finished, 1-inch thick, maple wood top is available through your KitchenAid Dealer. The height of the Compactor with wood top is adjustable from 35⅞-inches to 36⅞-inches.

## LOADING YOUR COMPACTOR



### **BUILT-IN LITTER BIN\* DOOR**

Small cans, paper scraps, small boxes and containers may simply be dropped into the Bin, rather than opening the large Trash Drawer. Trash will drop automatically into the large Trash Drawer when pulled open.

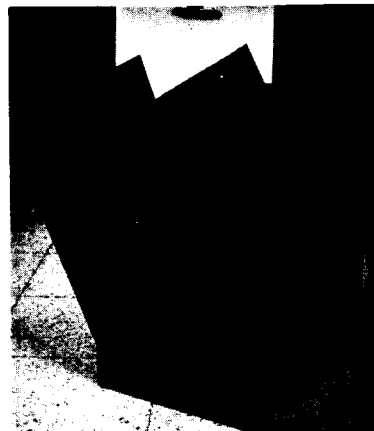


### **LARGE CAPACITY TRASH DRAWER**

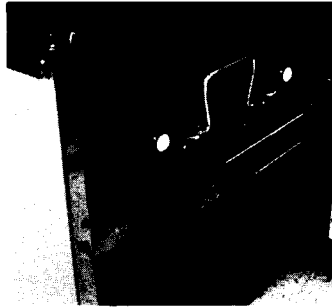
Large, bulky items should be placed directly into the drawer. It isn't necessary to run a compaction cycle everytime you place trash into the drawer. However, the more often you run a cycle, the more compact the trash will be.

### **TILT AWAY TRASH BASKET**

Your KitchenAid Trash Compactor is equipped with a versatile two-piece, polypropylene basket. It is designed especially for easy use and removal of compacted trash. The Tilt-Away Basket may be used with or without the enclosed complimentary supply of trash bags.



## USE OF TILT-AWAY TRASH BASKET WITHOUT BAGS

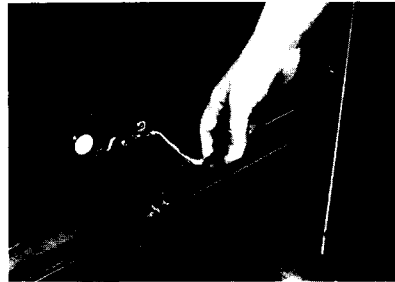


1. Place Basket Release Handle in upright position.
2. Put trash directly into the basket. We recommend placing several thicknesses of newspaper at the bottom of the basket when bags are not used. This will minimize clean-up of the basket after emptying compacted trash.

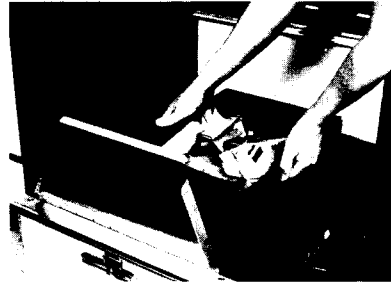
**NOTE:** Compacting a folded newspaper on top of loose trash will help keep the ram clean of trash or broken glass.

### TO REMOVE TILT-AWAY TRASH BASKET:

We recommend removing the basket when trash is compacted to four or five inches below the top of basket. If you find this too heavy, compact less trash next time. **REMEMBER** — the weight of the compacted trash will vary with the contents. Cans and bottles may weigh more than paper products.



1. Place Basket Release Handle in down position. Lift Built-In Storage Compartment Cover up.



2. Grasp both handles of basket and remove from drawer. Carry basket to trash storage area.



3. Pull handles of basket away from each other.



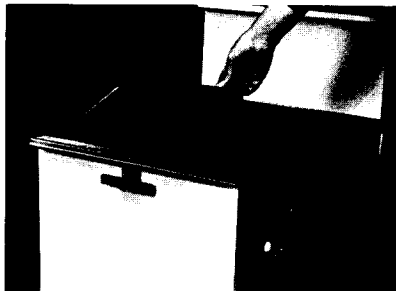
4. Dump compacted trash from half basket into waste receptacle.\*

**\*WARNING:** Compacted trash may contain broken glass, metal cans and other sharp objects. Always use the half basket to dump trash. **DO NOT USE BARE HANDS.**

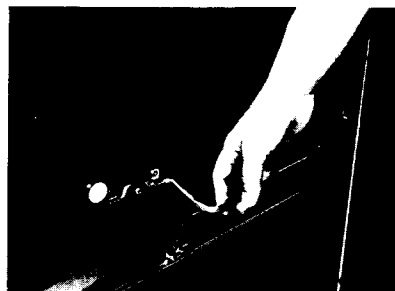
## USE OF TILT-AWAY TRASH BASKET WITH BAGS

**IMPORTANT** — Tilt-Away Trash Basket should always be in drawer when using compactor bags.

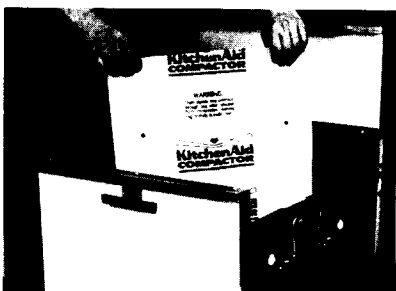
**NOTE:** Compacting a folded newspaper on top of loose trash will help keep ram clean of trash or broken glass.



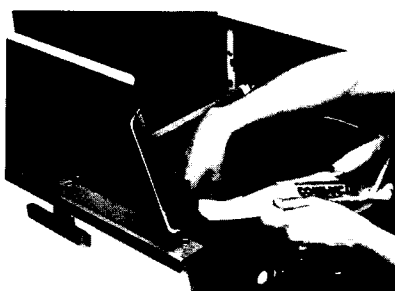
1. Lift Built-In Storage Compartment Cover.



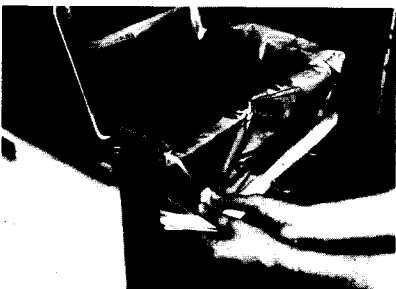
2. Pull Basket Release Handle down.



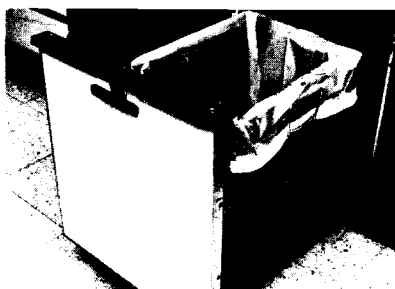
3. Place folded bag inside Tilt-Away Trash Basket.



4. Open bag. Pull top edges of bag over top of drawer.

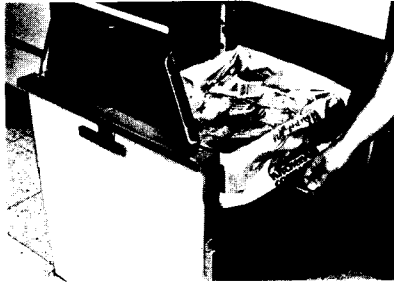


5. Lock bag in place by pulling four pre-punched holes over buttons on drawer sides. Holes will expand over buttons without damaging bag.

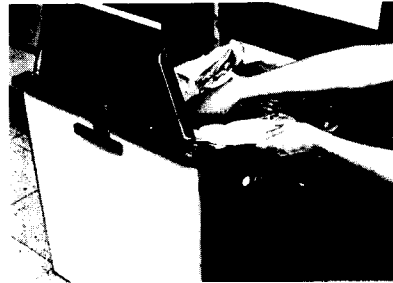


6. Spread bag to fit interior of basket. Close Storage Compartment Cover. Pull Basket Release Handle up.

**BAG REMOVAL** — We recommend removing bag when trash is compacted to four or five inches below top of basket. If you find this too heavy, compact less trash next time.



1. Pull Basket Release Handle down.



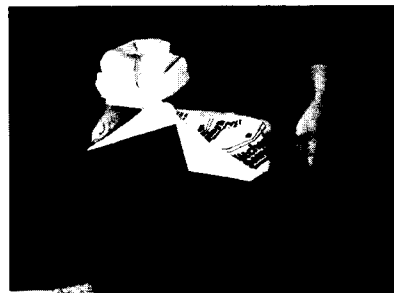
2. Lift Storage Compartment Cover up. Release bag from buttons. Pull up top edges of bag.



3. Close bag with twisties provided.



4. Grasp handles of basket and remove from drawer. Carry basket with bag to trash storage area.



5. Pull handles of basket away from each other to loosen bag.



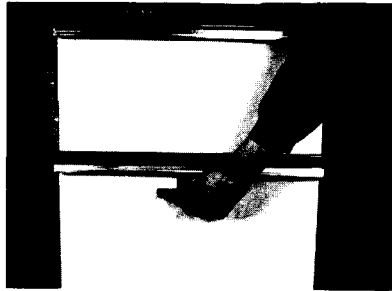
6. Lift bag out.\*

**\*WARNING:** Sharp objects may protrude through bag after removal from trash basket. Handle bag carefully by the top to avoid injury.



# **OPERATING YOUR KITCHENAID TRASH COMPACTOR**

## **TO START:**



1. Close large Trash Drawer.



2. Turn key to START position and HOLD MOMENTARILY. Release key.

## **THE COMPACTION CYCLE**

The Compactor ram will move down inside the trash drawer, reverse and return to original position, completing the cycle in approximately 35 seconds. As the basket is filled, the ram travels a shorter distance and cycle time decreases.

DURING THE COMPACTION CYCLE, THE RAM DOES NOT TOUCH THE BOTTOM OF THE DRAWER. THEREFORE, YOU CAN EXPECT TO CYCLE SEVERAL LOOSE TRASH LOADS BEFORE COMPACTION IS EVIDENT. THIS IS NORMAL AND NOT A CAUSE FOR CONCERN.

As the ram compacts difficult to break items, you may notice a downward movement of the Compactor drawer. This is normal and will not cause damage. The spring-loaded drawer is specially designed to move down freely and return to original position. The force of the ram during a compaction cycle is absorbed by the Rigidized Steel Frame of the Compactor.

## **TO STOP CYCLE AND OPEN DRAWER:**

You may stop or interrupt a compaction cycle at any time and raise the ram to its original position.

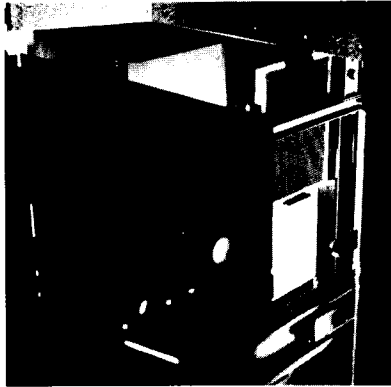
1. Turn the key to STOP/LOCK position to stop the ram.
2. Then turn the key to START position and HOLD MOMENTARILY to return the ram to original position. The drawer may then be opened.
3. Turn key to START position and HOLD MOMENTARILY to start another compaction cycle.



## CHARCOAL AIR FILTER WITH FAN

Your KitchenAid Trash Compactor features an Activated Charcoal Air Filter and Fan which absorbs and minimizes odor. The Charcoal Filter is located in the left rear section of the Compactor.

The degree of odor in your Compactor will depend upon the type trash you place in it. Since odors are absorbed into the pores of the Charcoal Filter, it may need to be replaced once or twice a year. Length of time before filter replacement is necessary varies with the types of trash compacted. WE RECOMMEND USE OF A KITCHENAID FOOD WASTE DISPOSER FOR GARBAGE.

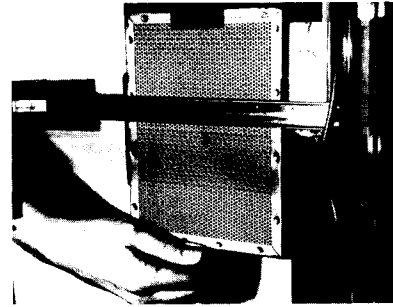


### CHARCOAL AIR FILTER FAN

ON — The fan creates fast air movement for greater odor removal.

OFF — Even when the fan isn't running, the filter is working to remove odor.

### TO REMOVE FILTER:



1. With Trash Drawer in open position, reach into left rear corner where filter is located.

2. Release filter from bottom clip and pull down.

### TO REPLACE FILTER:

Push replacement filter into place behind top clip. Snap securely into bottom clip.

## SPECIAL USE TIPS

### WHAT CAN YOU PUT IN YOUR COMPACTOR?

- Your KitchenAid compactor is designed to handle most dry trash. THE COMPACTOR IS NOT A SUBSTITUTE FOR A FOOD WASTE DISPOSER. We urge you to continue to dispose of garbage through a KitchenAid Food Waste Disposer. Most food waste will sour and become odorous when held at room temperature.
- Liquid or messy items should be wrapped in a newspaper or several thicknesses of paper toweling to help keep the Ram and Tilt-Away Trash Basket clean.
- Place glass bottles on their sides in the center for compacting rather than upright. Bottles and cans may nest in lightly compacted paper. When a sufficient load is accumulated, most will be crushed. However, due to the resiliency of paper, some bottles may not break.

Don't be alarmed by the popping noise made when bottles are crushed. This is normal and will not damage the compactor. Placing a newspaper over bottles before compacting will help muffle noise.

- More trash can be compacted if you stop the Ram in the "down" position and allow it to dwell there overnight. This will result in heavier bags of compacted trash.

### WE DO NOT RECOMMEND COMPACTING THESE ITEMS:

- Trimmings from cleaning fish or chicken
- Grapefruit or cantaloupe rinds
- Paint, oil, gasoline or turpentine cans or rags which have been used with these materials
- Aerosol cans
- Insecticide, toxic or caustic chemical containers
- Wood scraps, rocks, solid metal or large quantities of newspaper. These items are already in their compact form.

**WARNING:** AVOID FIRE AND HEALTH HAZARDS. DO NOT COMPACT CONTAINERS OF FLAMMABLE OR TOXIC MATERIALS OR AEROSOL CANS

### VACATION CARE

- If you are planning a weekend vacation, you may not want to remove compacted trash if basket is only partially full. We recommend you simply lock the Compactor. On your return, you may wish to run the Charcoal Air Filter Fan for a short time before opening the drawer.
- If you are planning to be away for more than a weekend, we recommend that you remove and discard the compacted trash. Replace basket and lock the Compactor. Before running a compaction cycle, ALWAYS check that no item has been mistakenly placed in the Trash Drawer.

## **CARING FOR YOUR COMPACTOR**

### **COMPACTOR INTERIOR**



#### **BUILT-IN LITTER\* DOOR AND AREA:**

Wipe clean with a cloth or sponge and a mild detergent or ammonia and water. Rinse with clear water and dry. Do not use abrasive or harsh cleansers.



#### **TILT-AWAY TRASH BASKET:**

Clean as necessary after emptying compacted trash. Wearing rubber gloves and using paper toweling, remove any small pieces of debris from basket such as paper or crushed glass. **AVOID CONTACT WITH BARE HANDS.** Light soil may be wiped away with a damp sponge or cloth. Heavy soil may require use of mild detergent and water. Rinse with clear water and dry.



#### **RAM:**

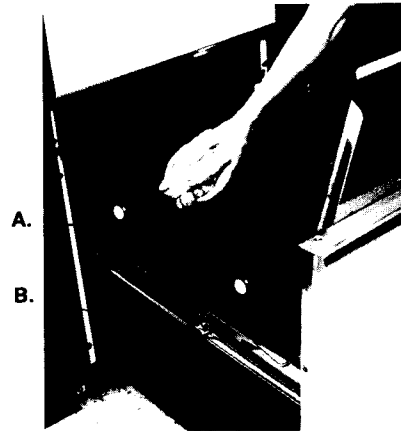
Clean as necessary. Wearing rubber gloves and using paper toweling, remove any small pieces of debris from ram, such as paper or crushed glass. **AVOID CONTACT WITH BARE HANDS.** Light soil may be wiped clean with a cloth and mild detergent and water. Heavy soil may require the use of a dampened scouring pad. Rinse with clear water and dry.

**METAL DRAWER LINER:**

Clean as necessary using a cloth or sponge and a mild detergent and water. Rinse with clear water and dry. Do not use abrasive cleansers.

**METAL DRAWER:**

Occasionally, the drawer latch rod (A), and slide hook (B) located on both sides of the drawer opening should be lubricated. This will prevent the door latch from squeaking or sticking and help insure and extend the life of the latch mechanism. We suggest soap or a solid stick lubricant which can be purchased at auto supply or hardware stores.

**BEHIND METAL DRAWER:**

Occasionally check the area behind the Trash Drawer and remove any small pieces of trash. Placing a folded newspaper on top of trash will help prevent small items from sticking to the ram and falling behind the drawer.

**COMPACTOR EXTERIOR****FRONT PANELS:**

Wipe clean with a cloth or sponge and mild detergent and water. Rinse with clear water and wipe dry. Do not use abrasive cleansers.

**TEXTURED STEEL BROWN TOP:**

Wipe clean with a cloth or sponge and mild detergent and water. Rinse with clear water and wipe dry. Do not use abrasive cleaners. TO AVOID PERMANENT DAMAGE TO FINISH, DO NOT USE TEXTURED STEEL TOP FOR A CUTTING SURFACE.

**MAPLE WOOD TOP:**

The maple wood top is prefinished with a protective lacquer seal. For daily care, wipe with a damp cloth. To remove stubborn stains, cover stain with dampened scouring powder for three to five hours. Then wipe away with a damp cloth.

After an extended period of use, it may be necessary to recondition the top by lightly sanding off all remaining lacquer and applying mineral oil to the cutting board. Saturate a clean cloth with oil and wipe on. Allow to absorb overnight. Repeat oil treatment the following day and allow to stand four to six hours before removing excess oil with soft, dry cloth. The top is then ready to use. Repeat treatment every six to eight months, as necessary.

## CHANGING FRONT PANELS

Your Compactor comes equipped with two reversible front panels painted Almond/White and Harvest Wheat/Onyx Black, providing four front panel colors from which to choose.

Additional Compactor Front Panels are available in Fresh Avocado/Coffee or Stainless Steel from your KitchenAid Dealer.

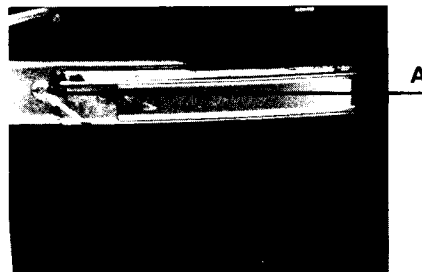
If you want to change the color of the panels, follow these steps:

### LITTER BIN® DOOR PANELS:

1. **DISCONNECT POWER SUPPLY TO COMPACTOR BEFORE CHANGING PANEL.**
2. Open Litter Bin Door and remove three retaining screws in door handle; remove handle.
3. Slide panel out. **HANDLE CAREFULLY SO THE PANELS WILL NOT BE SCRATCHED OR BENT.** Replace panel so the desired color is exposed.
4. Replace the handle and screws.

### DRAWER PANELS — RECESSED UNIT:

1. **DISCONNECT POWER SUPPLY TO COMPACTOR BEFORE CHANGING PANEL.**
2. Be sure ram is in "up" position.
3. Open drawer to fully extended position.
4. Remove drawer retaining screws (A) which hold drawer to track assembly. Carefully remove drawer from track assembly, making sure that full weight of drawer is supported at all times.
5. Tilt drawer on its back.
6. Remove three retaining screws in lower drawer trim. Remove loosened trim. Slide panel out. **HANDLE CAREFULLY SO THE PANELS WILL NOT BE SCRATCHED OR BENT.** Replace panel so desired color is exposed, making sure that handle trim bezel is placed into slots in panels.
7. Replace trim and screws.
8. Re-attach drawer to track and replace drawer retaining screws.



### DRAWER PANELS — FREE STANDING UNIT:

1. **DISCONNECT POWER SUPPLY TO COMPACTOR BEFORE CHANGING PANEL.**
2. Tilt compactor toward rear. **DO NOT LAY UNIT ON ITS BACK OR DAMAGE TO CORD MAY RESULT.**
3. Remove three retaining screws in lower drawer trim. Remove loosened trim and slide panels out. **HANDLE CAREFULLY SO THE PANELS WILL NOT BE SCRATCHED OR BENT.** Replace panel so desired color is exposed, making sure that handle trim bezel is placed into slots in panels.
4. Replace trim and screws.

### CUSTOM FRONT PANELS TO ACCENT KITCHEN DECOR

The stainless steel trim will also accommodate a locally purchased wood front up to 1/4-inch thick. For more instructions on installing a wood front, refer to the Installation Instructions.

## USE ENERGY WISELY

A trash compactor uses a negligible amount of energy. Total energy requirements associated with the trash compactor will be minimized by following the recommendations in this Use and Care Guide.

ENERGY USAGE	KWH per month	Cost per month
2 cycles per day	1.01	\$0.06*

\*Based on average utility rate of \$0.06 per kilowatt hour.

## IF YOU NEED SERVICE OR ASSISTANCE FOLLOW THESE STEPS

1. IF YOUR COMPACTOR SHOULD FAIL TO OPERATE, CHECK THE FOLLOWING BEFORE CALLING YOUR DEALER. SAVE THE COST OF A SERVICE CALL; THE FOLLOWING SITUATIONS ARE NOT COVERED BY THE WARRANTY:
  - A. Is a fuse blown or the circuit breaker open? On free standing units, is the cord plugged into a grounded outlet?
  - B. Is the Trash Drawer tightly closed? It is possible for a cycle to be incomplete when the drawer has not been firmly closed before turning the key to START. If this occurs, the unit will shut off, but the drawer cannot be pulled open. Close the drawer firmly and turn the key to START. The ram will return to the original "up" position.
  - C. Have you read your Use and Care Guide for complete instructions?
2. WHO TO CALL FOR SERVICE... See information listed in Warranty Statement.
3. If you are not satisfied with the action taken, contact the Major Appliance Consumer Action Panel (MACAP). MACAP is a group of independent consumer experts that voices consumer views at the highest levels of the major appliance industry. Contact them only when the dealer, authorized servicer or KitchenAid, Inc. have failed to resolve your problem. MACAP will in turn inform us of your action.

Major Appliance Consumer Action Panel  
20 North Wacker Drive  
Chicago, IL 60606

IN ALL CORRESPONDENCE, PLEASE INCLUDE THE FOLLOWING INFORMATION: Date, your name, address and telephone number, type of appliance, brand, model number, serial number, date purchased, dealer from whom purchased (include address), servicing agent's name and address (if different from dealer's), location of appliance and CLEARLY describe problem and service required.

# KitchenAid®

## COMPACTOR WARRANTY

LENGTH OF WARRANTY:	KITCHENAID WILL PAY FOR:	KITCHENAID WILL NOT PAY FOR:
<b>ONE YEAR FULL WARRANTY FROM DATE OF PURCHASE.</b>	Replacement parts and repair labor to correct defects in materials or workmanship. Service must be provided by a KitchenAid authorized servicing outlet.	A. Service calls to: <ol style="list-style-type: none"> <li>1. Correct the installation of the compactor.</li> <li>2. Instruct you how to use the compactor.</li> <li>3. Replace house fuses or correct house wiring.</li> </ol> B. Repairs when compactor is used in other than normal home use.
<b>FIVE YEAR LIMITED WARRANTY ONE YEAR FULL PLUS SECOND THROUGH FIFTH YEAR LIMITED FROM DATE OF PURCHASE.</b>	Replacement parts (repair labor costs not included) for the one-half horsepower motor if defective in materials or workmanship.	C. Damage resulting from accident, alteration, misuse, abuse, improper installation or installation not in accordance with local electrical codes. D. Any labor costs during the limited warranty. E. Replacement parts or repair labor costs for units operated outside the United States. F. Pickup and delivery. This product is designed to be repaired in the home.

**KITCHENAID, INC. DOES NOT ASSUME ANY RESPONSIBILITY FOR INCIDENTAL OR CONSEQUENTIAL DAMAGES.** Some states do not allow the exclusion or limitation of incidental or consequential damages, so this exclusion or limitation may not apply to you.

This warranty gives you specific legal rights and you may also have other rights which vary from state to state.

### HOW TO ARRANGE FOR SERVICE

- First call your dealer or repair service he recommends.
- All service should be handled locally by the dealer from whom you purchased the unit or an authorized KitchenAid servicing outlet. If your local service is not satisfactory, contact the Customer Relations Department, KitchenAid, Inc., P.O. Box 558, St. Joseph, Michigan 49085-0558. Call Toll Free: 800-422-1230.

KitchenAid, Inc.  
St. Joseph, Michigan, USA 49085